

# ***Multiple Display - Set-up Instruction -***

Display Business Unit

Date: 2013/07/15

# Minimum Hardware Requirements

Specific graphic cards are required for multi-display set-ups. NVIDIA\* GeForce GTX 670 and AMD\*\* Radeon™ HD 5700 Series and above are ideal for supporting multiple display set-ups.

\* NVIDIA Surround technology only supports 3+1 displays.

\*\* AMD Eyefinity technology supports up to 7 displays;  
also depends on the number of I/O ports on the graphic card.



# SET-UP WITH **NVIDIA GRAPHIC CARD**

# Multiple Display: Set-up with **NVIDIA Graphic Card**

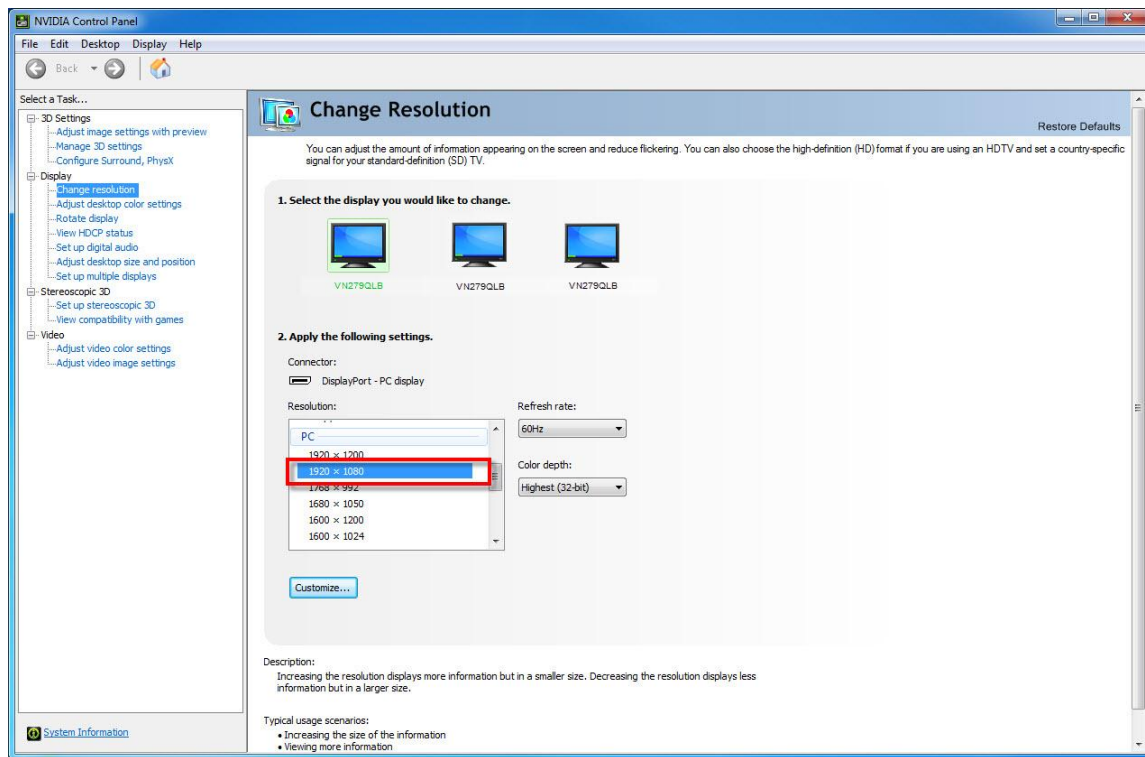
## Step 1.

Open [NVIDIA Control Panel](#)

→ click [Change resolution](#)

→ select the display you would like to change

→ select the native resolution which the monitors are supporting (e.g. VN279QLB with 1920x1080 resolution)

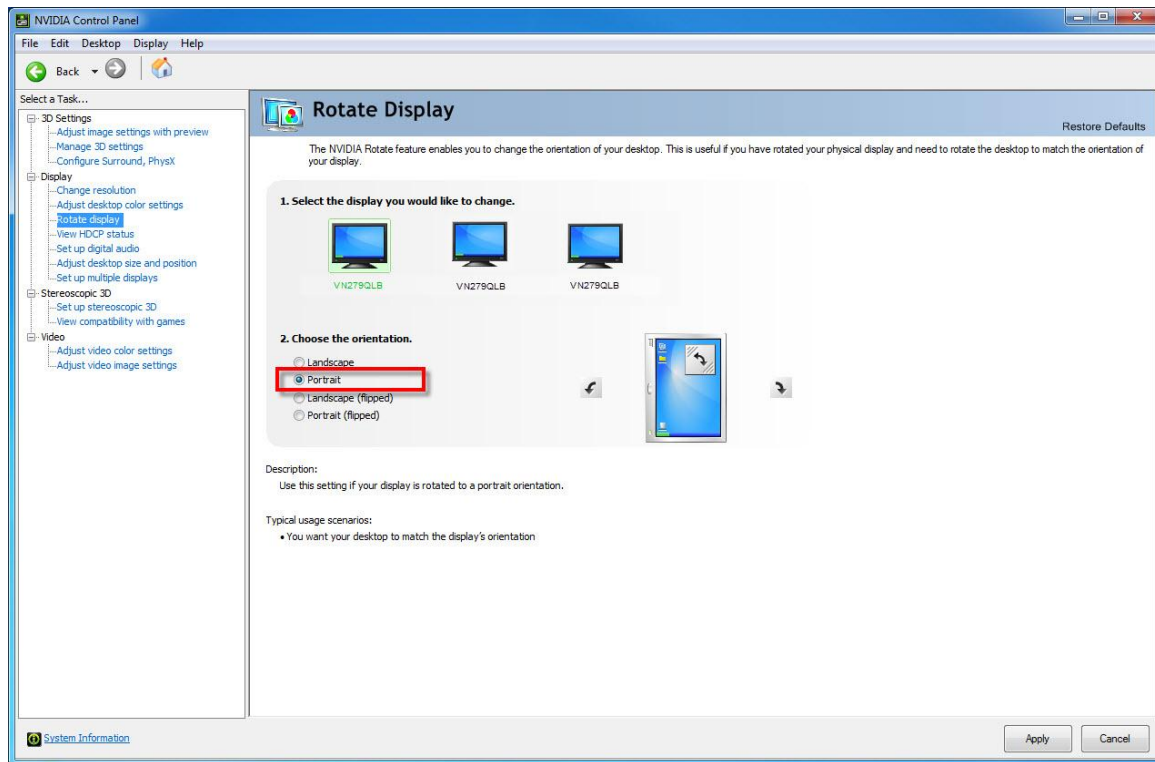


# Multiple Display: Set-up with **NVIDIA Graphic Card**

## Step 2.

Click **Rotate display**

→ choose the orientation (e.g. select **Portrait** for VN279QLB multi-display)



# Multiple Display: Set-up with **NVIDIA Graphic Card**

## Step 3.

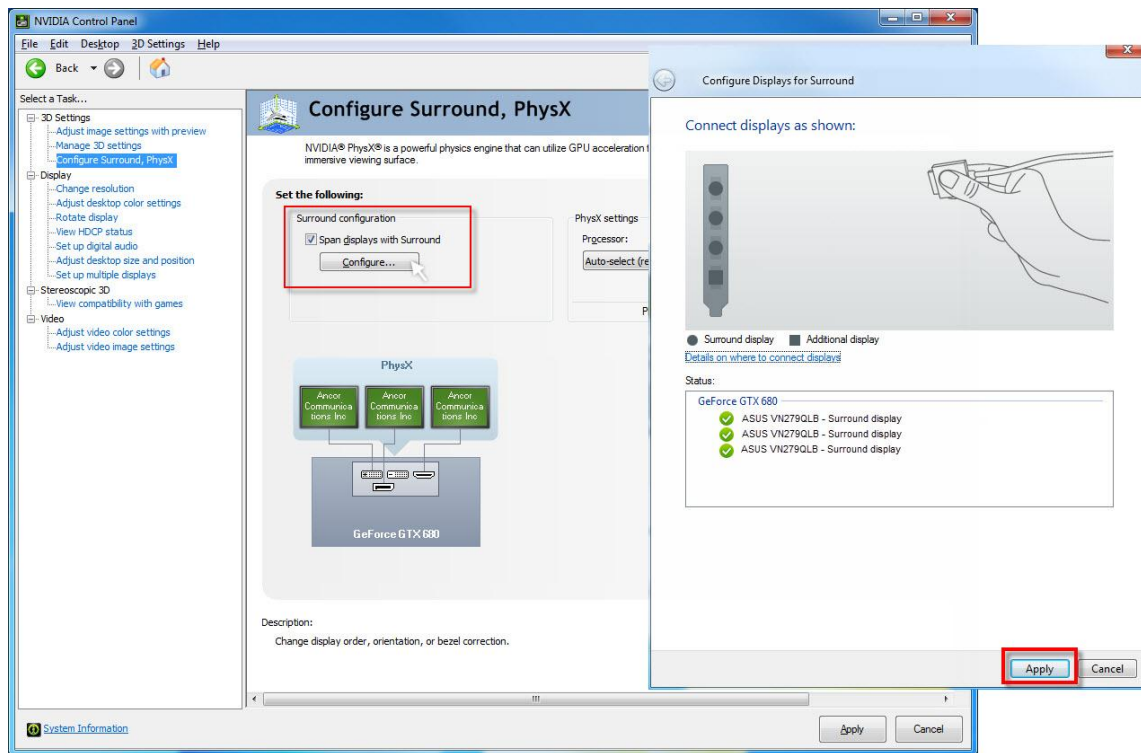
Click **Configure Surround, PhysX**

→select **Span display with Surround**

→click **Configure**

→a Pop-up window will show up

→then click **Apply**



# Multiple Display: Set-up with **NVIDIA Graphic Card**

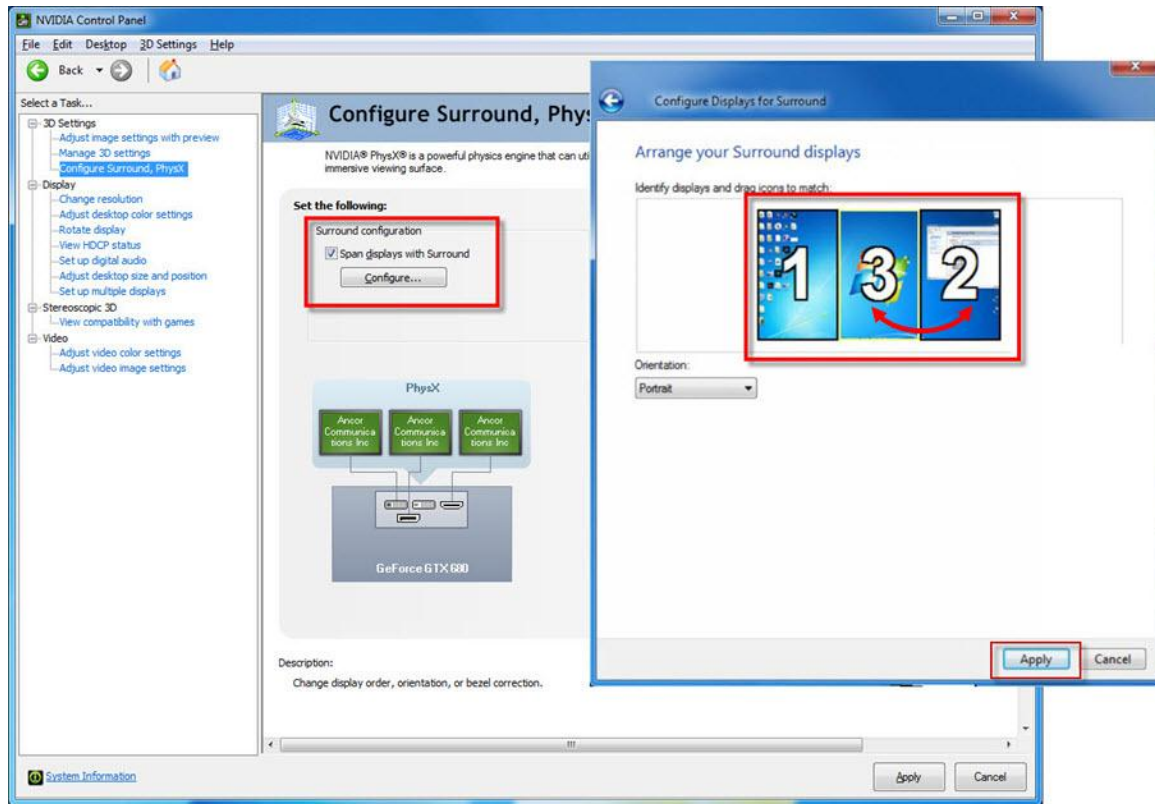
## Step 4.

Arrange your Surround displays,  
identify display and drag icon to match  
the order

→ click **Apply**



▲ VN279QLB x 3

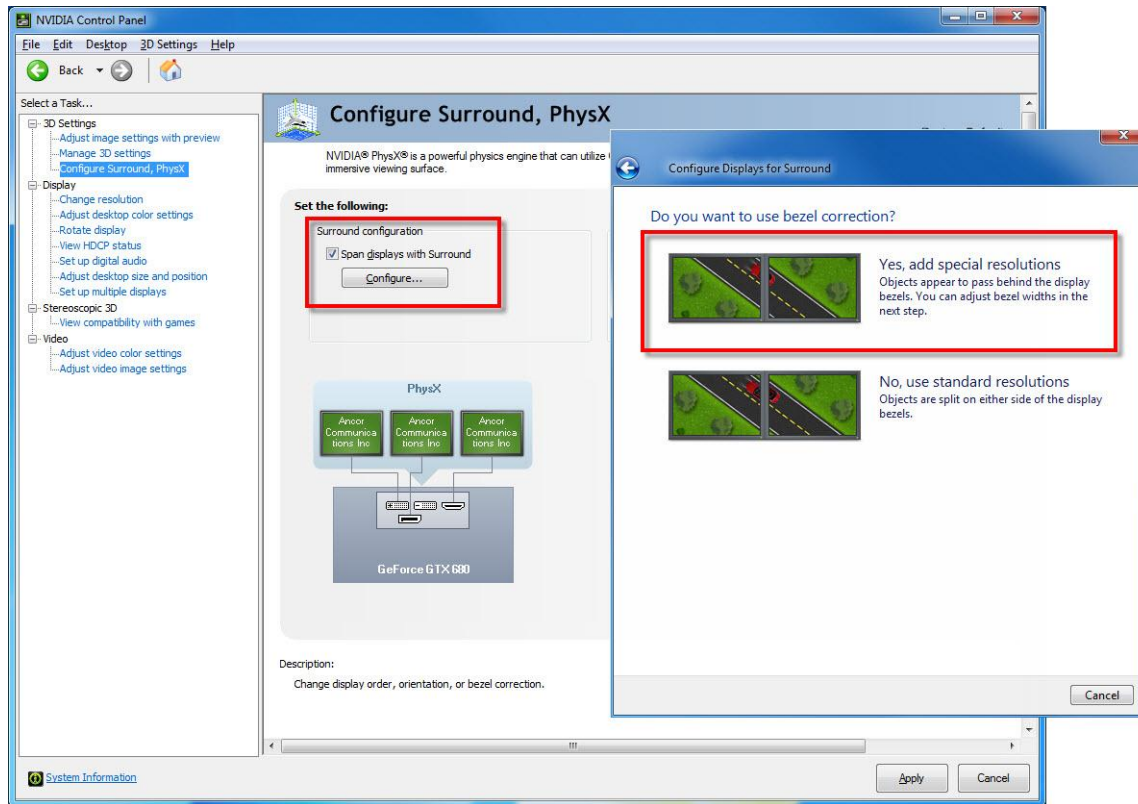




# Multiple Display: Set-up with **NVIDIA Graphic Card**

## Step 5.

Click **Yes**, **add special resolutions** to use  
bezel correction to let the cross-screen  
image looks smooth





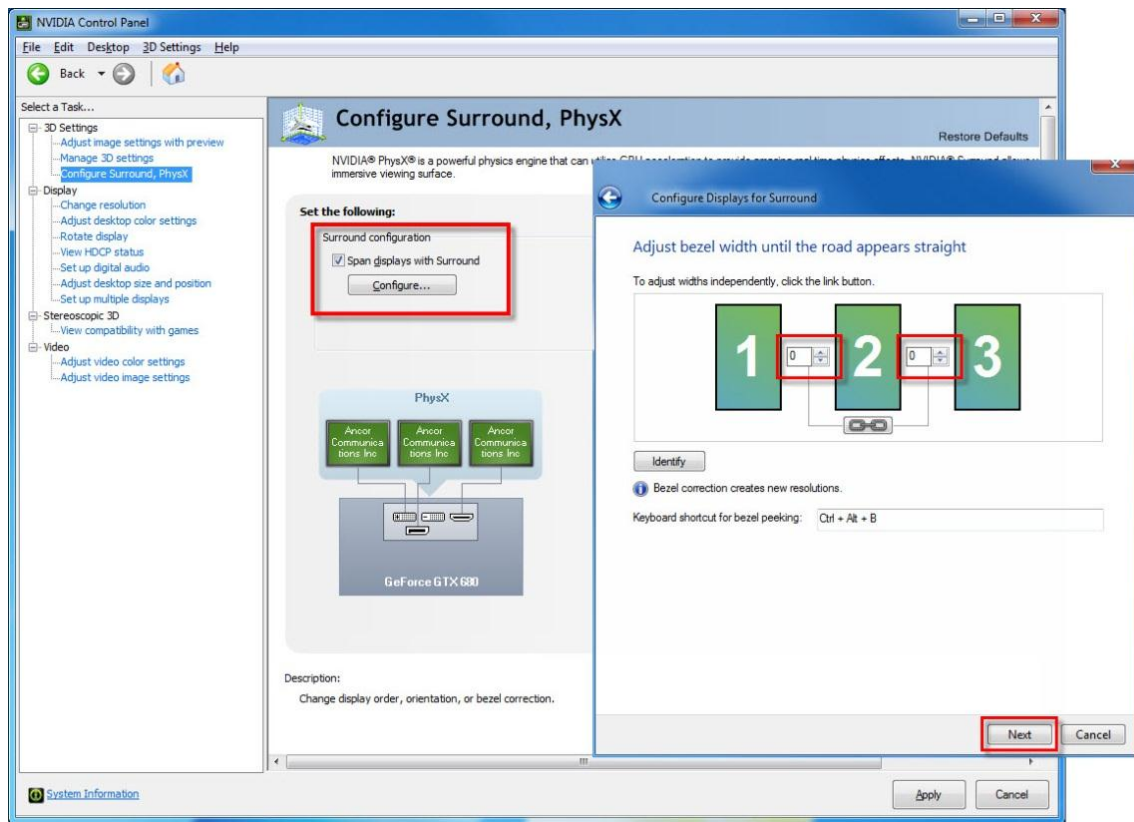
# Multiple Display: Set-up with **NVIDIA Graphic Card**

## Step 6.

Enter the number of pixel to adjust  
bezel width until the road appears  
straight

→ click Next

(e.g. if use VN279QLB for multi-display  
set-up, the number of pixel is 64 for  
portrait, 51 for landscape.)



# Multiple Display: Set-up with **NVIDIA Graphic Card**

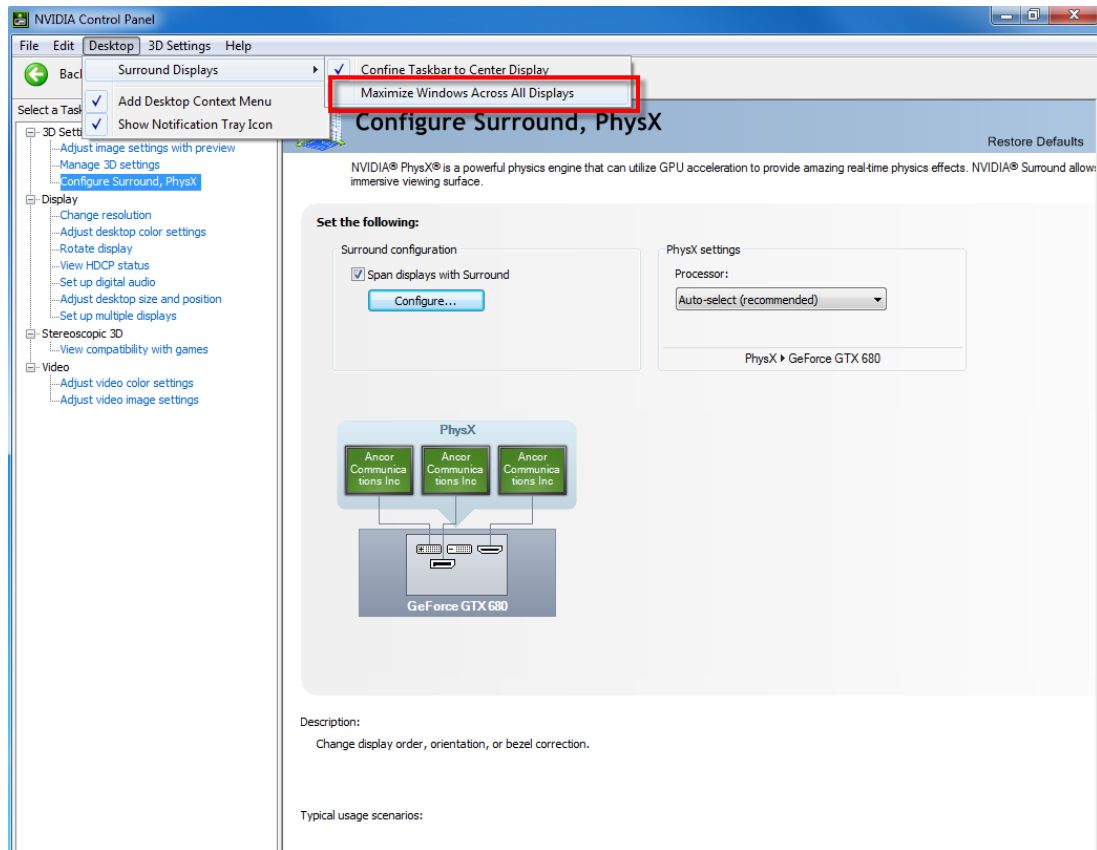
## Step 7.

Click Desktop on the menu bar

→ select Surround Displays

→ select Maximize Windows Across All Displays

→ Done



# SET-UP WITH **AMD GRAPHIC CARD**

# Multiple Display: Set-up with **AMD Graphic card**

## Step 1.

Open AMD Catalyst Control Center

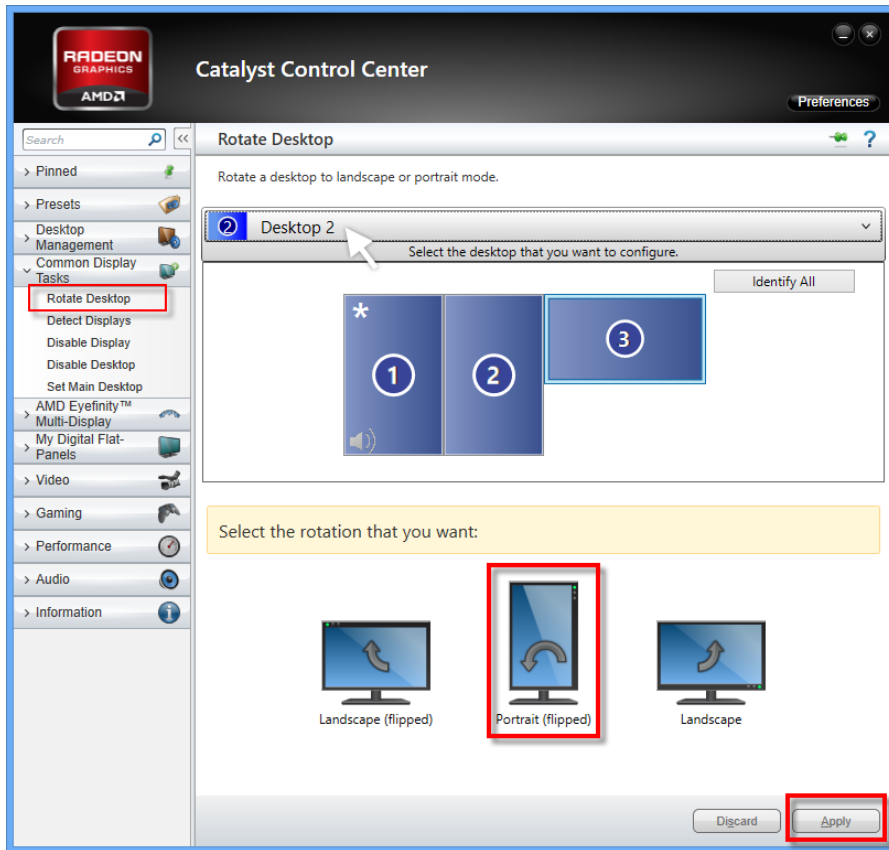
→ click Common Display Tasks

→ click Rotate Desktop

→ select the rotation that you want for  
each monitor

→ click Apply

(e.g. select Portrait for VN279QLB  
multi-display)



# Multiple Display: Set-up with **AMD Graphic card**

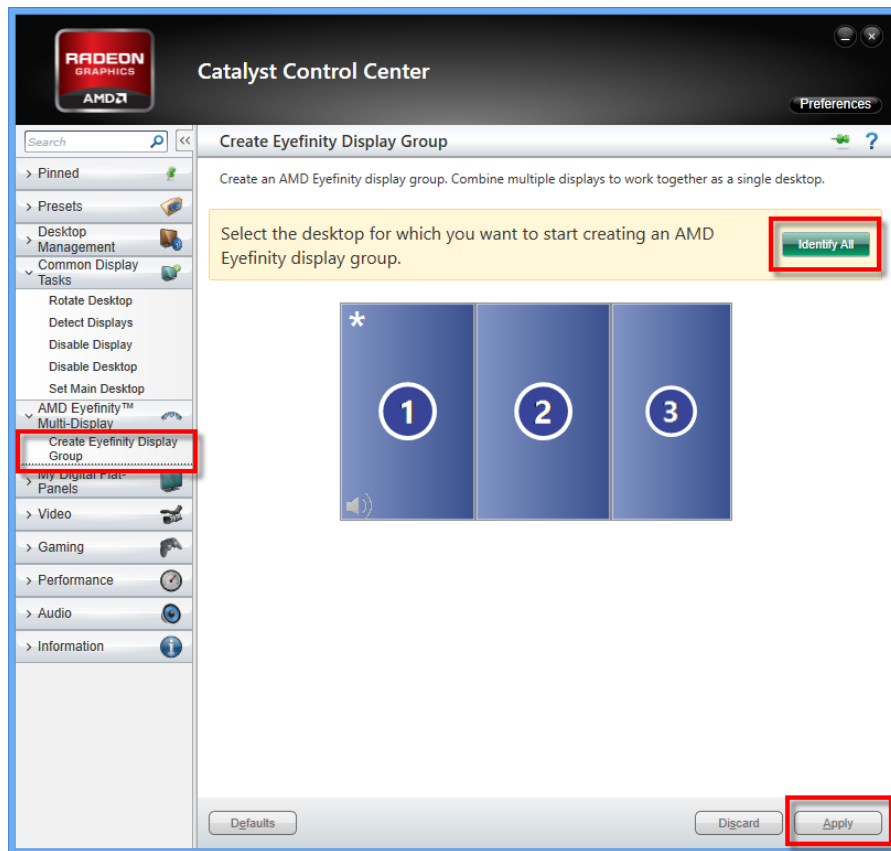
## Step 2.

Click AMD Eyefinity Multi-Display

→ click Create Eyefinity Display Group

→ click Identify All

→ click Apply



# Multiple Display: Set-up with **AMD Graphic card**

## Step 3.

Select the one for which you want to set up for the main desktop

→ click Continue



# Multiple Display: Set-up with **AMD Graphic card**

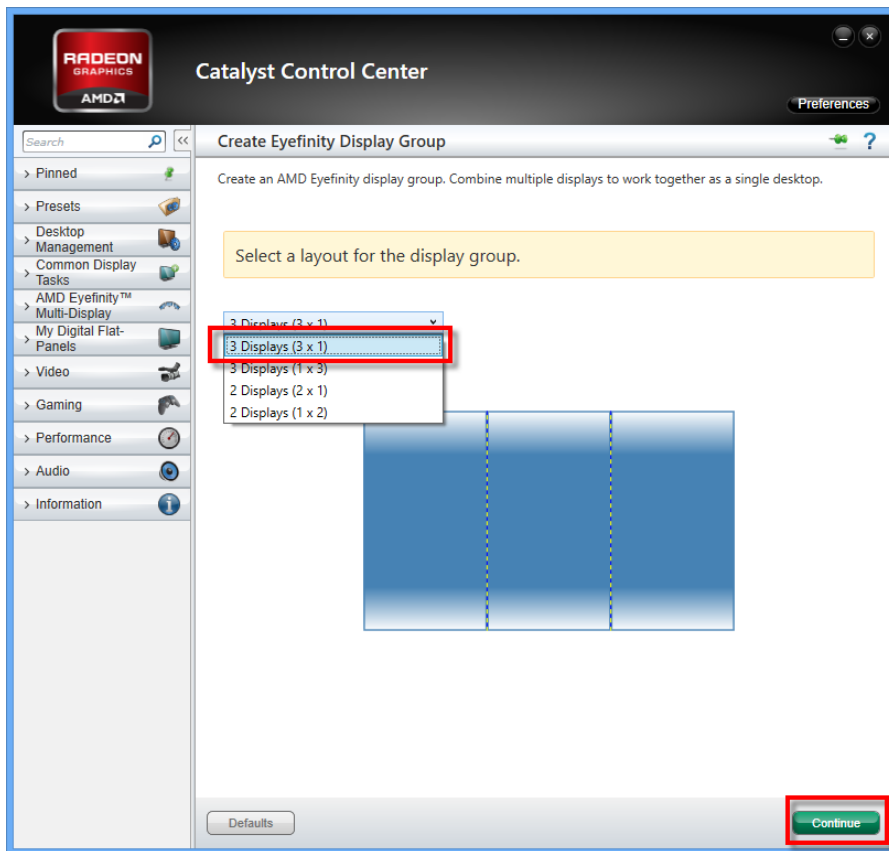
## Step 4.

Select a layout for the display group

→ click Continue

(e.g. select 3 Display (3x1) for

VN279QLB portrait multi-display)





# Multiple Display: Set-up with **AMD Graphic card**

## Step 5.

Click Arrange to correct the relative position of the display in your display group



# Multiple Display: Set-up with **AMD Graphic card**

## Step 6.

Follow the direction to select the grid position which corresponds to the physical position of the display

→ click Done

